

RIVERTON HIGH SCHOOL BAND PROGRAM

Audition Guidelines

All students auditioning on a wind instrument should be prepared to perform, from memory:

- All twelve major scales - full range
- One chromatic scale beginning on a prescribed pitch - two octaves
- One natural minor scale of the student's choice - two octaves
- One melodic minor scale of the student's choice - two octaves
- One harmonic minor scale of the student's choice - two octaves

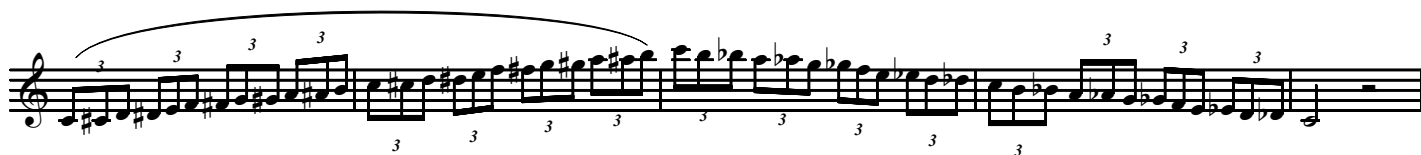
Diatonic Scales:

- ⊖ Use a legato articulation on the ascending scale, slur the descending scale.
- ⊖ Perform the scale in the concert key, as indicated by the audition committee.
- ⊖ Use the rhythm shown below and play in time with the metronome. (♩ = 80 bpm)



Chromatic Scale:

- ⊖ Slur the ascending scale, use a legato articulation on the descending scale.
- ⊖ Begin and end the scale on the pitch indicated by the audition committee.
- ⊖ Use the rhythm shown below and play in time with the metronome. (♩ = 60 bpm)



Prescribed Etude / Excerpt:

- ⊖ Tempo markings are given with the selection.
- ⊖ Prepare the selection using a tempo close to the recommended tempo, which should be compatible with the character and style of the selection.
- ⊖ Use the rhythm shown below and play in time with the metronome.

Andante. ♩ = 97 bpm